

# Mk3D POWER PACKS

Industry standard range of 12V & 24V dc  
Power Units for a wide range of mobile  
applications.

Flows to 20l/min

Pressures to 300bar

Motors 1,6kW to 3kW (nominal)

## FEATURES

Pressure balanced gear pump

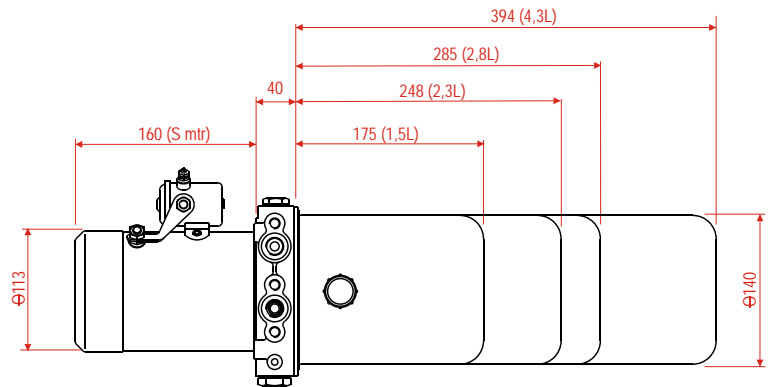
Quiet operation with long life

Industry standard mounting

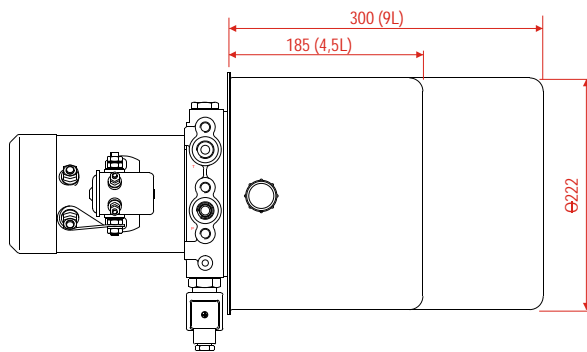
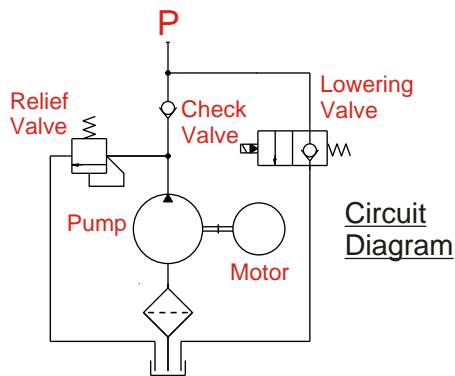
Precision "quiet" relief valve

Wide range of options

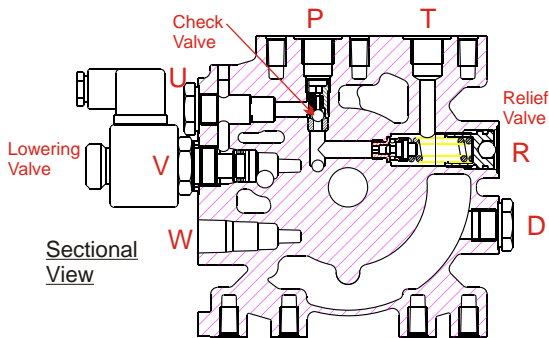
Global support & servicing



Typical Mk3D Pack  
Featuring 4.5" (113mm) S Motor  
Small diameter Tanks

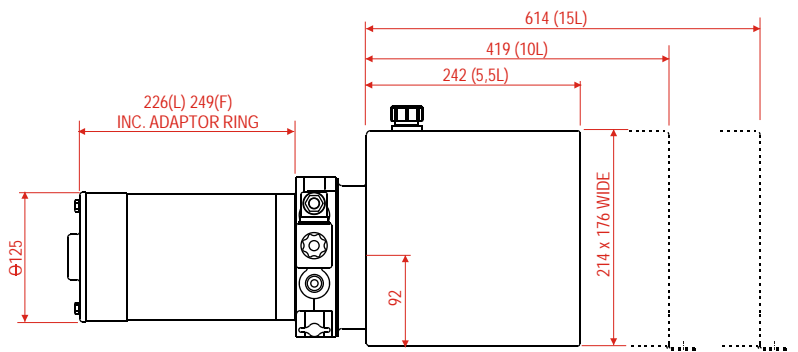


Typical Mk3D Pack  
Featuring 4.5" (113mm) S Motor  
Large Diameter Tanks



### Ports Marked on Casting

P = Pressure Port	3/8" BSP
T = Tank Port	3/8" BSP
R = Relief Valve	
D = Drain Port	3/8" BSP
W = Not Used	
V = Valve Cavity	
U = Aux Pressure Port	3/8" BSP



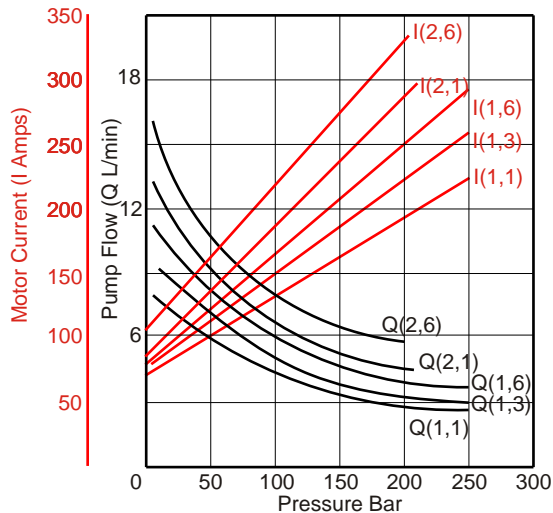
Typical Mk3D Pack  
Featuring 5" (125mm) L or F Motor  
Rectangular Tanks

# PERFORMANCE DATA Mk3D POWER PACKS

## MOTOR TYPE S (Series Wound, $\varnothing 113\text{mm}$ )

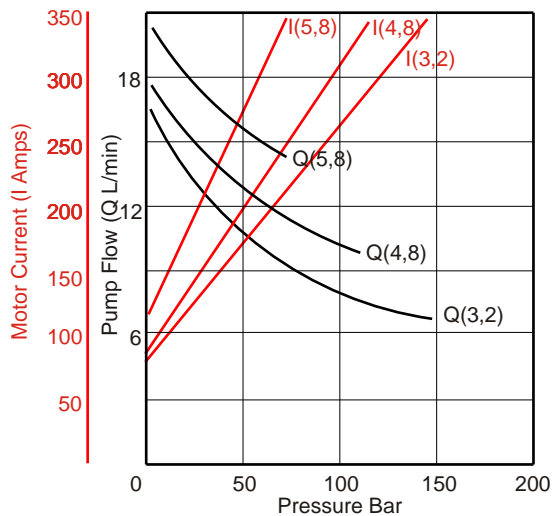
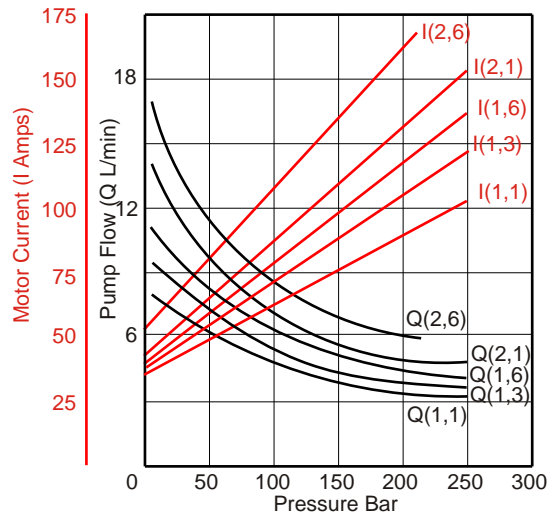
Nominal performance of pack combinations at constant voltage  
and at nominal 20<sup>o</sup>-25<sup>o</sup> C with ISO VG22 oil.

### 12V Motor

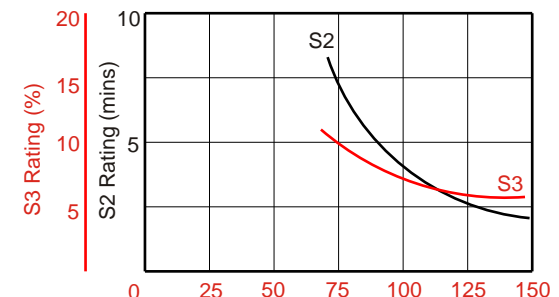
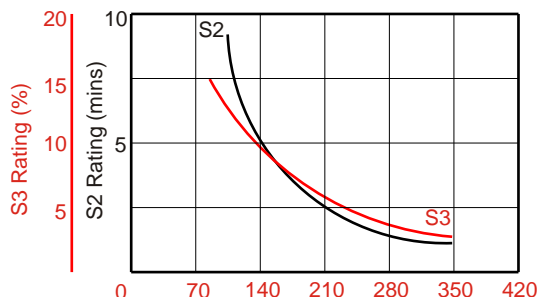
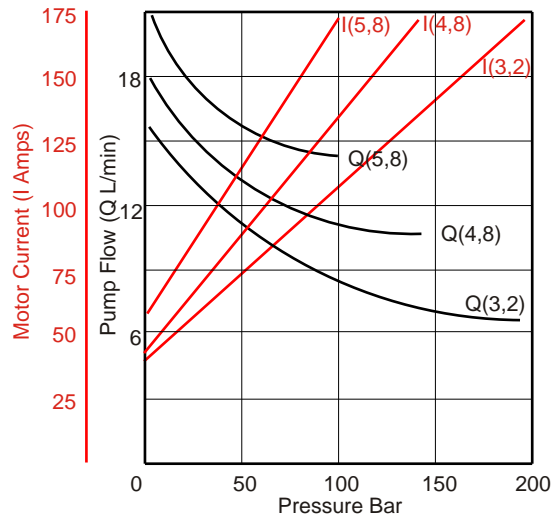


For Pump Capacities:  
1,1cc/rev  
1,3cc/rev  
1,6cc/rev  
2,1cc/rev  
2,6cc/rev

### 24V Motor



For Pump Capacities:  
3,2cc/rev  
4,8cc/rev  
5,8cc/rev

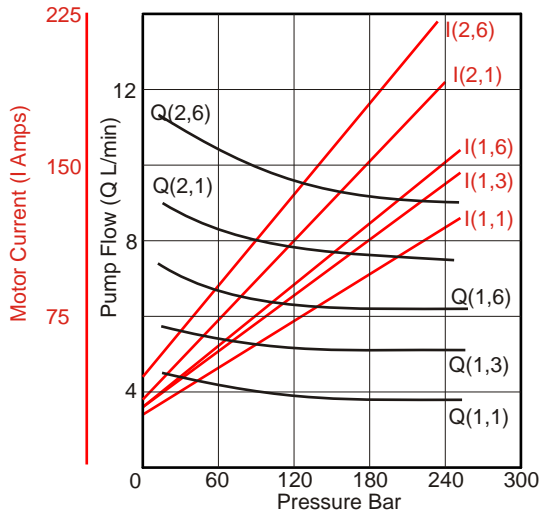


# PERFORMANCE DATA MK3D POWER PACKS

## MOTOR TYPES L & F (Long Rated/Fan Cooled $\varnothing 126\text{mm}$ )

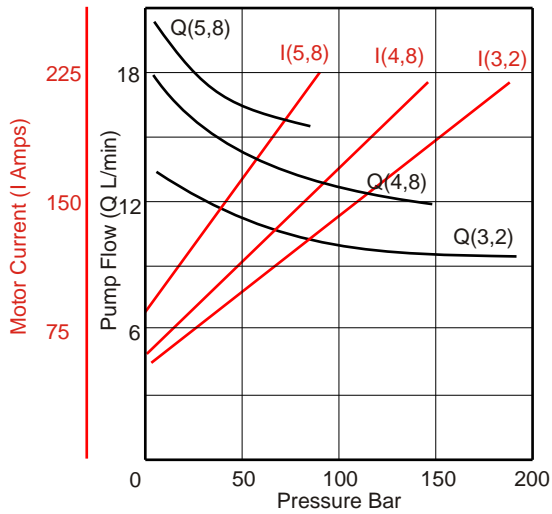
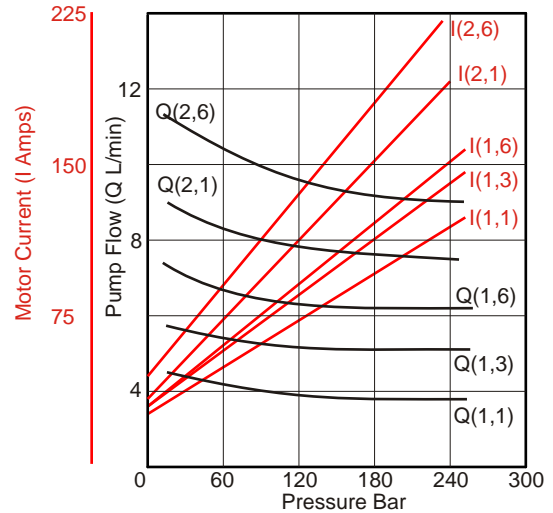
Nominal performance of pack combinations at constant voltage  
and at nominal 20<sup>o</sup>-25<sup>o</sup> C with ISO VG22 oil.

### 24V 'L' Motor



For Pump Capacities:  
1,1cc/rev  
1,3cc/rev  
1,6cc/rev  
2,1cc/rev  
2,6cc/rev

### 24V 'F' Motor



For Pump Capacities:  
3,2cc/rev  
4,8cc/rev  
5,8cc/rev

