

fluidlink

HYDRAULICS

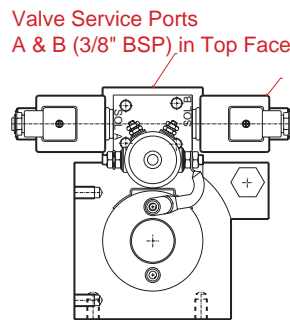
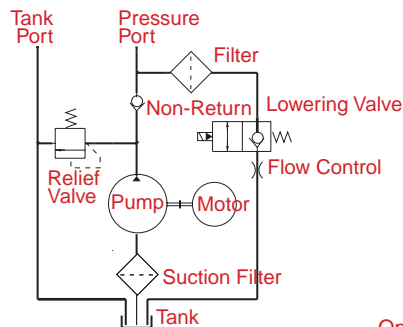
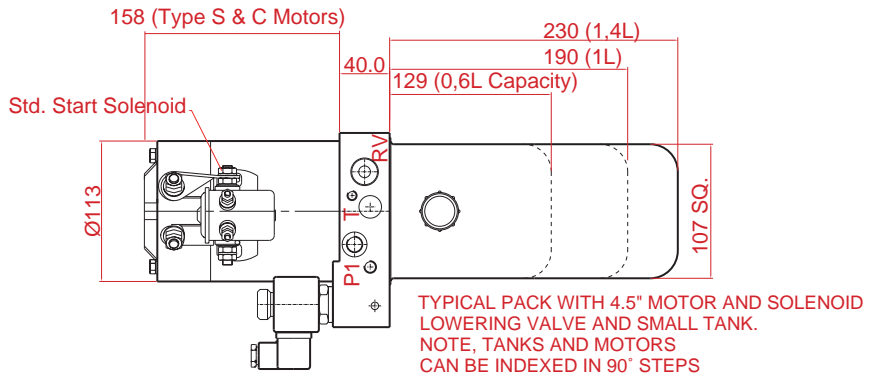
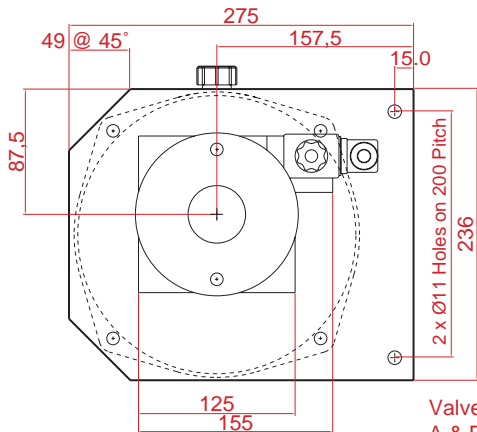
SLIMLINE DC

POWER PACKS

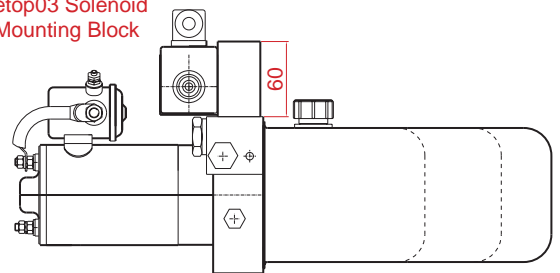
Industry standard range of 12V & 24V dc power packs for a wide range of mobile applications
 Flows up to 20 l/min
 Pressures to 270 bar
 Motors: 800W, 1,6kW & 3kW (nominal ratings)

Pressure balanced gear pumps for quiet operation
 Versatile horizontal or vertical configuration
 Interchanges with market-leading products
 High quality motors with replaceable brushes (except 800W)

Solid aluminium alloy centre plate
 Wide range of options available
 Precision "quiet" relief valve



Optional Cetop03 Solenoid Valve and Mounting Block



PACK WITH 3" MOTOR AND FITTING FOR STANDARD SOLENOID VALVE

TYPICAL CIRCUIT

Relief Valve Adjustment 30-300 bar
 App 40 bar per turn

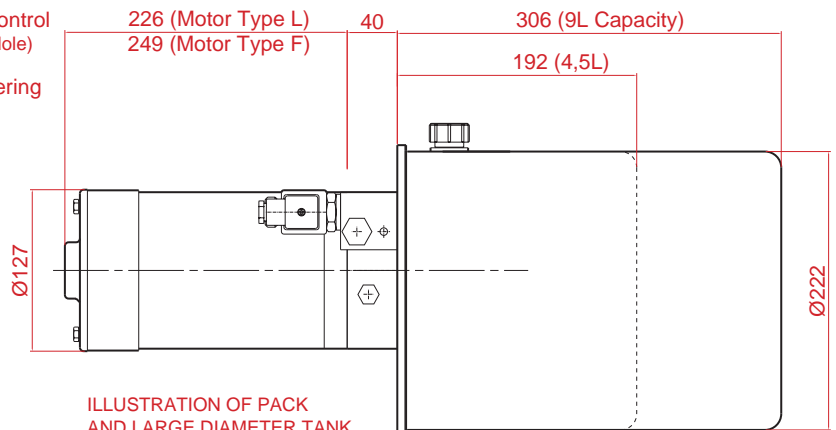
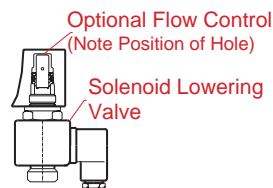
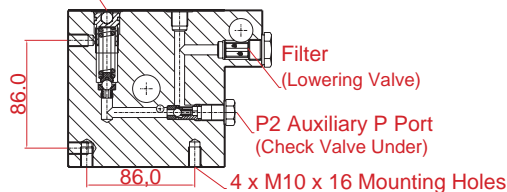


ILLUSTRATION OF PACK AND LARGE DIAMETER TANK WITH 5" MOTOR, SOLENOID LOWERING VALVE

PERFORMANCE DATA MOTOR TYPE S

Nominal performance of motor/pump combinations at constant voltage and at a nominal 20-25°C with ISO VG32 oil.

Ratings:

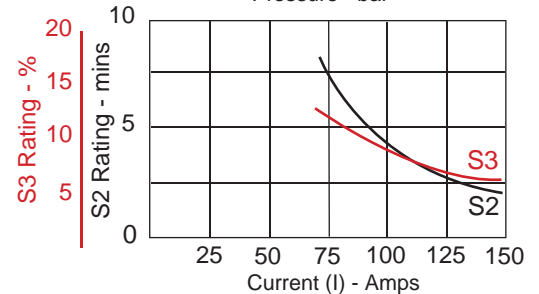
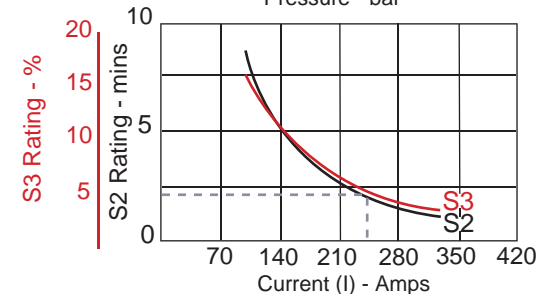
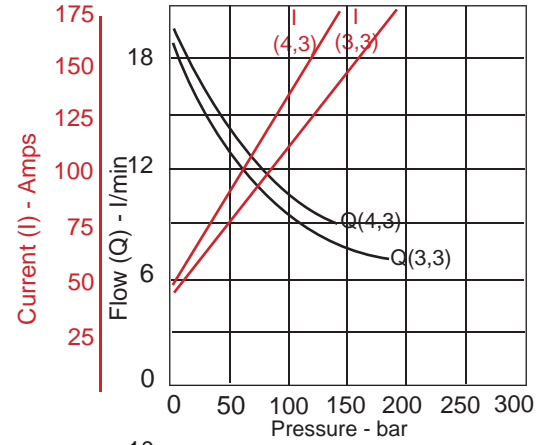
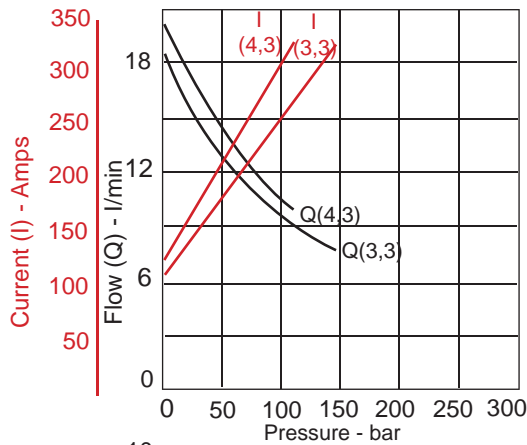
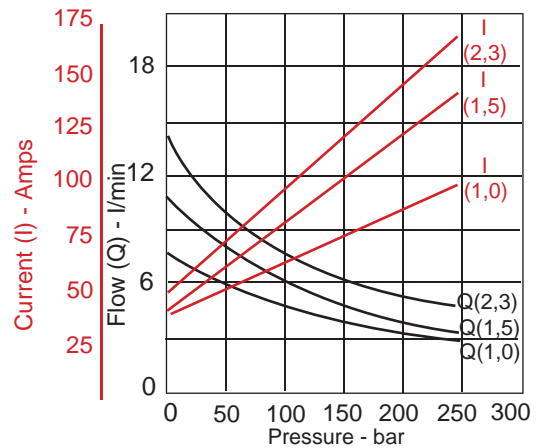
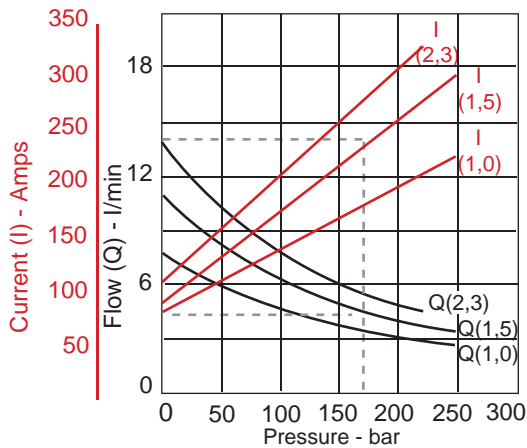
S2 is short-time operation rating and is the time in minutes for the Brush temperature to reach 150°C. For example, a 12v motor with a 1,5 cc/rev pump delivers 4,8 l/min at 170 bar drawing a current of 229 amps. It could be operated from cold for 2.3 minutes under these conditions before the motor reaches its maximum rated temperature. The motor would have to be fully cooled before repeating the cycle.

S3 is the duty rating expressed as the percentage ON time in a 10 minute cycle.

For example, a 10% S3 rating is one minute ON followed by 9 minutes OFF.

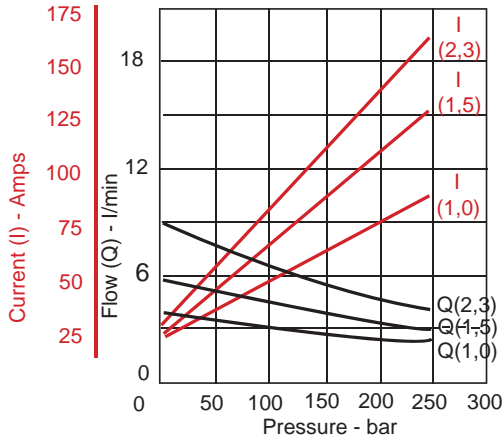
12v Motor

24v Motor



PERFORMANCE DATA MOTOR TYPE C

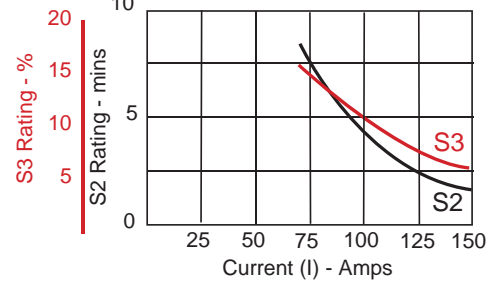
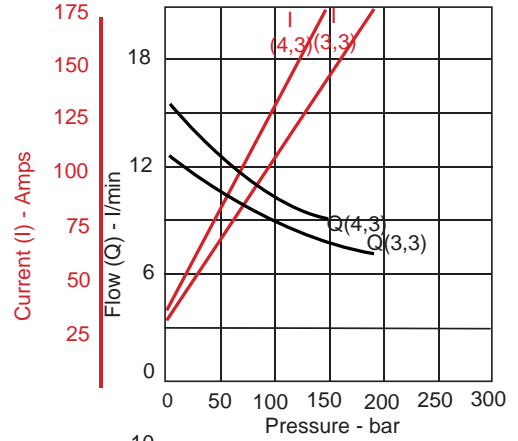
24v Motor



For Pump capacities:
1,0 cc/rev
1,5 cc/rev
2,3 cc/rev

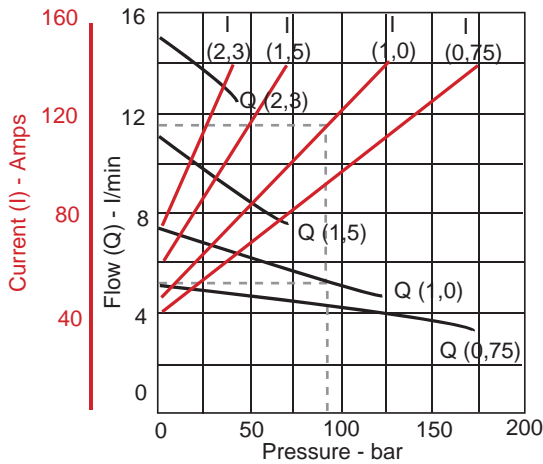
For Pump capacities:
3,3 cc/rev
4,3 cc/rev

Motor Ratings
S2 and S3
(see note above)



800W (K MOTOR)

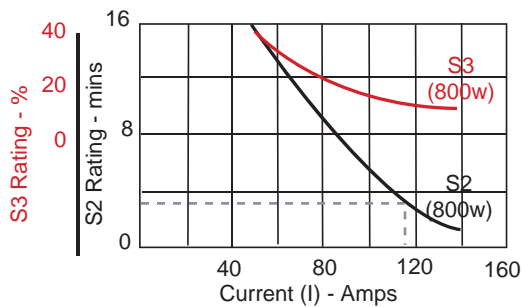
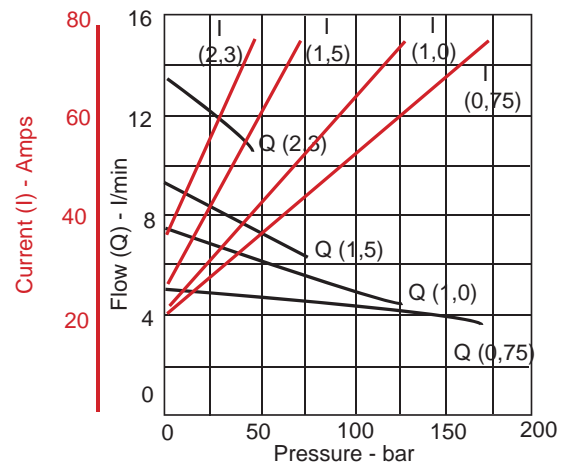
12v Motor



800W Motor
Type K

Motor Rating
S2 and S3
(see note above)

24v Motor



Refer to Mk3c DC
for Type 'L' and
Type 'F' Motors

